

December 15, 2022

100% Design Community Meeting

Three Points ES Comprehensive Renovation



**Orange County
Public Schools**

Three Points ES Meeting Agenda

December 15, 2022, 6:00PM

- Welcome: School Board Member Maria Salamanca
- Introductions: Lauren Roth, Assistant Director, Public Relations
- Project Update

Architect: C.T. Hsu + Associates, PA

- Questions and Answers
- Adjournment



***Welcome Message from
District 2 Board Member
Maria Salamanca***

Three Points ES



***Introductions by
Assistant Director, Public Relations
Lauren Roth***



CAMPUS AERIAL

PROJECT DATA

743 Student Stations / 447 Enrollment

Building Area:
112,357 Gross SF

Parking Provided:
138 Spaces

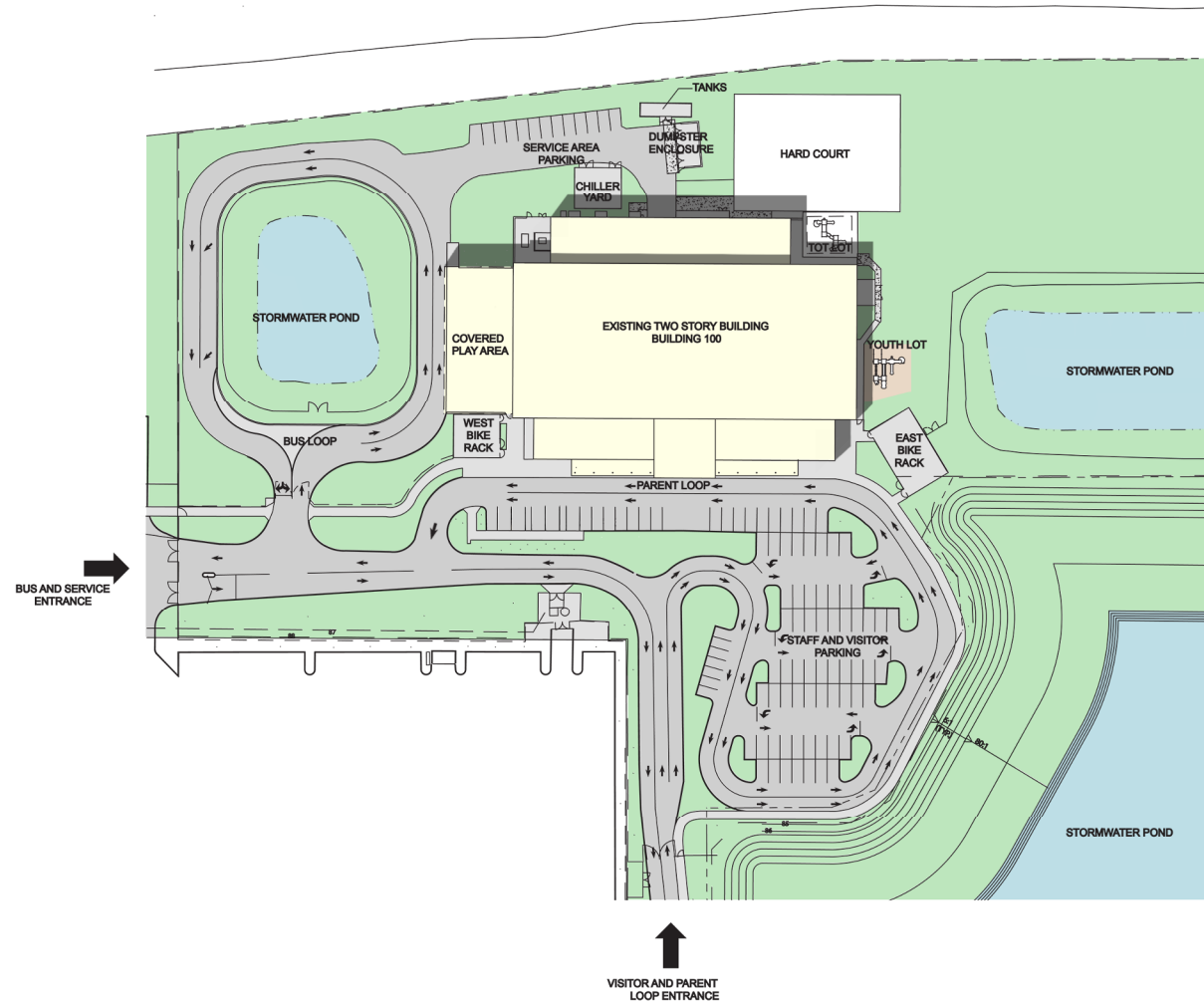
Site Area:
13 Acres



GROUNDS

PROPOSED SCOPE OF WORK

- Reconfigure Parent Drop Off and Bus loop to improve traffic flow
- Replace old fencing
- Provide concrete sidewalks at missing locations required for egress
- Replace damaged or lifted concrete walk panels
- Clean out existing retention pond
- Re-landscape the campus and remove trees and shrubs in poor condition in select areas
- Replacement of Tot Lot
- Refurbishment of Youth Lot
- Recoat and restripe Hard Court



BUILDING ENVELOPE

PROPOSED SCOPE OF WORK

- Remove and replace sealant at all brick vertical control joints
- Seal around all wall mounted equipment to make watertight
- Remove and replace window gaskets where deteriorated

- Re-paint all exterior doors
- Full replacement of gutter and downspouts
- Refurbish roof



BUILDING SYSTEMS

PROPOSED SCOPE OF WORK

- HVAC system upgrades
- Fire alarm system upgrades
- Exterior lighting improvements
- Lightning protection system
- Upgrade interior lighting
- Upgrade security and intercom systems
- New sound systems



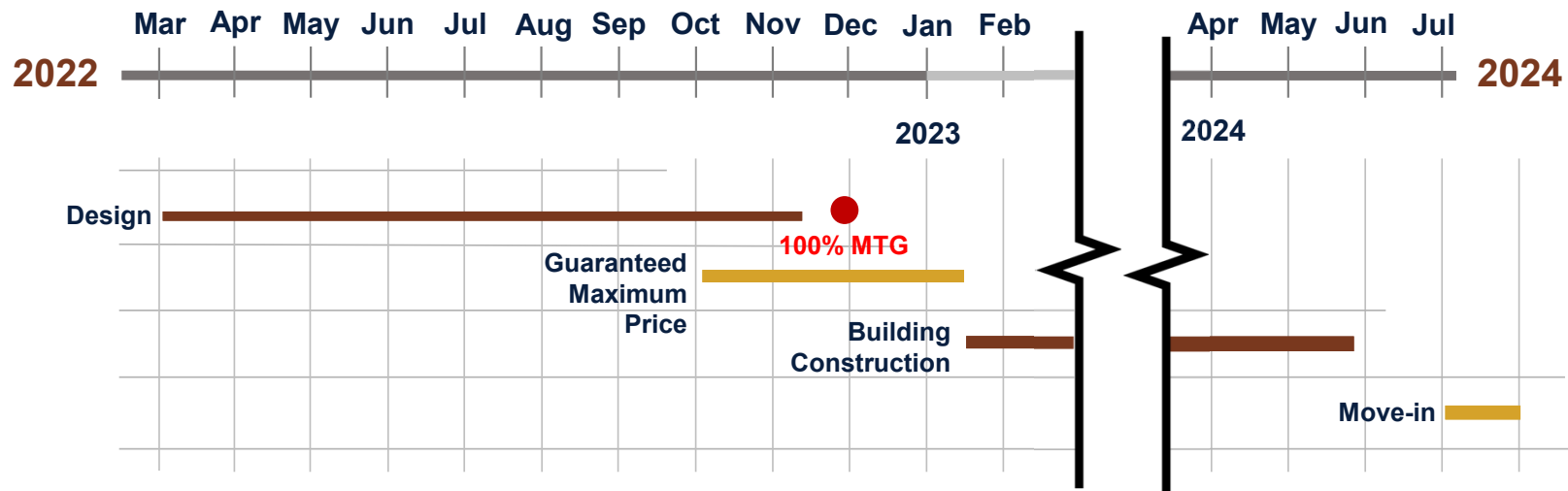
BUILDING IMPROVEMENTS

PROPOSED SCOPE OF WORK

- New finishes, furniture & equipment
- Remodel of kitchen and cafeteria
- Remodel of CCTV studio
- Replacing damaged cabinets
- Replace interior signage
- Relocate Head Start Program from portable into main building



Design & Construction Schedule



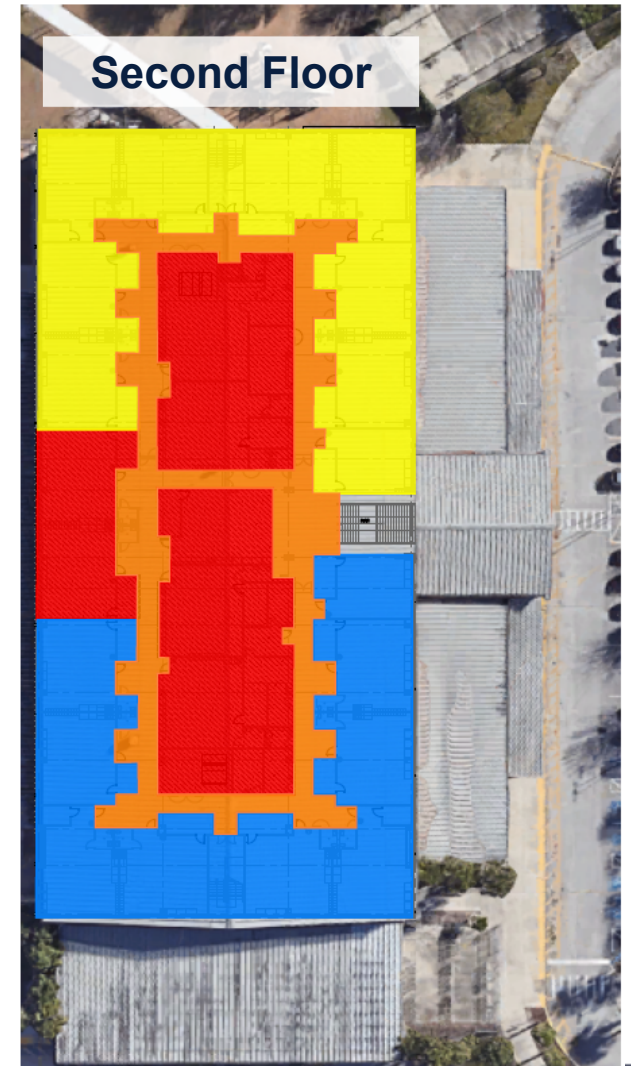
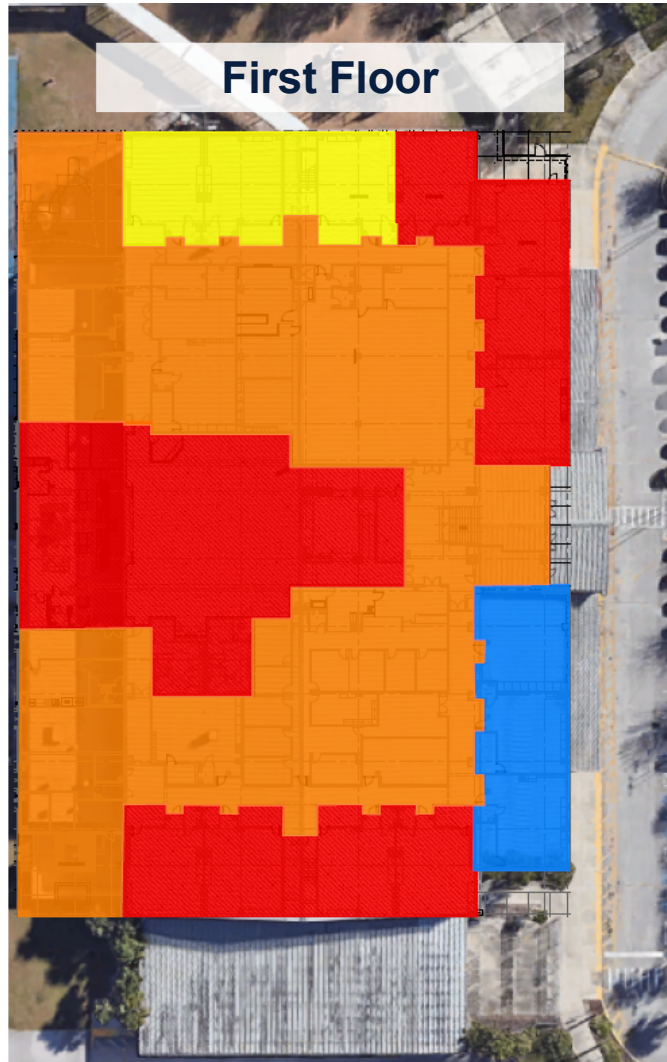


SITE UTILIZATION PLAN

1. Power at Head Start
2. Contractor Double Construction Fence
3. Construction Trailer
4. Containers
5. Lift Station
6. Back flows and water services

Phasing Plan

-  Phase I
-  Phase II Activity I
-  Phase II Activity II
-  Phase II Activity III



SAFETY

OCCUPIED CAMPUS CONSTRUCTION

- JLA Badges
- Student & Faculty Safety
- Dust and Noise Control
- Laydown
- Parking
- Real-Time Delivery
- Constant Communication
- Construction Progress Updates
- Separation of Work from Active Campus



GOOD NEIGHBOR POLICY

Good Neighbor

- Dust Control
- Noise Control
- Construction Traffic
- Site Containment





**Thank you to the Orange County taxpayers, who
make our construction program possible.**

Questions?